



Duct Castle

For Engineering Industries

داكت كاسل للصناعات الهندسية

SPECIALISTS
WE INNOVATE

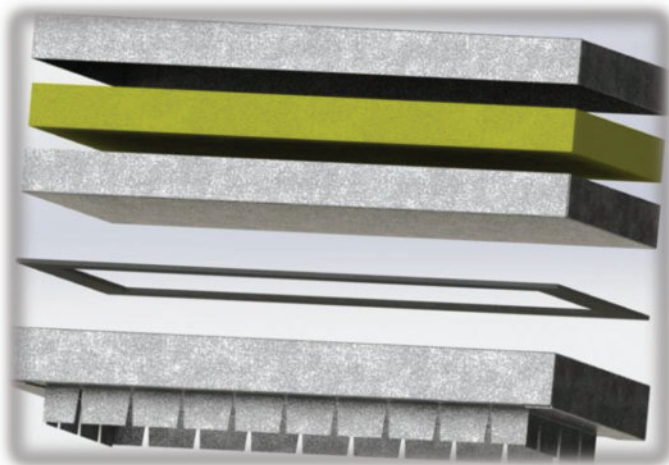


Access Doors
CATALOGUE



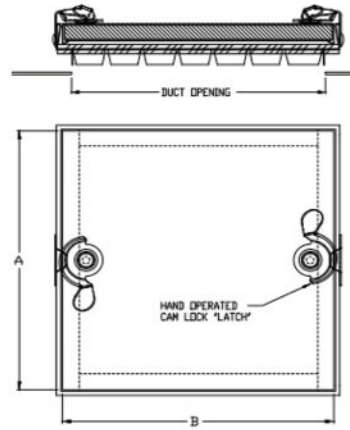
Overview

- The Insulated Access Door has been designed to create an airtight seal utilizing a moisture, oil and grease resistant neoprene gasket between the door to frame and the frame to duct.
- The door panel is constructed out of 24 ga. (0.7 mm) galvanized steel and filled with a 25 mm thickness, 48 kg/m² density fiberglass insulation.
- the frame is constructed out of 24 ga. (0.7mm) galvanized steel for doors up to 16" and 22 ga. (0.8 mm) for doors 18" up to 24."



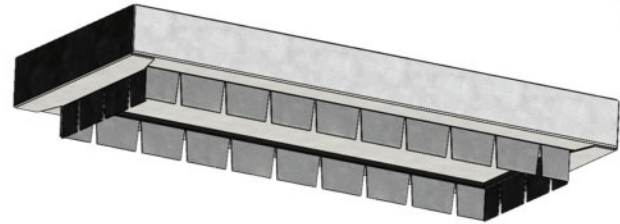
Standard Sizes:

Size	A(in)	B(in)	Duct Opening	Cam (No)
6*6 (in) 150*150 (mm)	6	6	150*150 (mm)	2
8*8 (in) 200*200 (mm)	8	8	200*200 (mm)	2
10*10 (in) 250*250 (mm)	10	10	250*250 (mm)	2
12*12 (in) 300*300 (mm)	12	12	300*300 (mm)	2
14*14 (in) 350*350 (mm)	14	14	350*350 (mm)	2
16*16 (in) 400*400 (mm)	16	16	400*400 (mm)	4
18*18 (in) 450*450 (mm)	18	18	450*450 (mm)	4
20*20 (in) 500*500 (mm)	20	20	500*500 (mm)	4
22*22 (in) 550*550 (mm)	22	22	550*550 (mm)	4
24*24 (in) 600*600 (mm)	24	24	600*600 (mm)	4
26*26 (in) 650*650 (mm)	26	26	650*650 (mm)	4
28*28 (in) 700*700 (mm)	28	28	700*700 (mm)	6
30*30 (in) 750*750 (mm)	30	30	150*150 (mm)	6



Non Standard Sizes:

Duct Castle have the ability to satisfy any special sizes for Example the rectangular sizes.



Camlock and keeper

Application : To facilitate the installation of a access door & windows Camlock and keeper.

Material: Galvanized steel / Zinc plated steel / Stainless steel

Feature: Stamping parts

Thickness: Cam-1.2mm/1.5mm

Surface treatment: Galvanized /Zinc plate



SPECIALIST SO WE INNOVATE



Duct Castle

For Engineering Industries



28km, Alex-Cairo Desert Road,
Abu Rawash Industrial Zone, Giza, Egypt.



www.ductcastle.com

+20 1273300121 +20 1270139060

sales@ductcastle.com info@ductcastle.com